

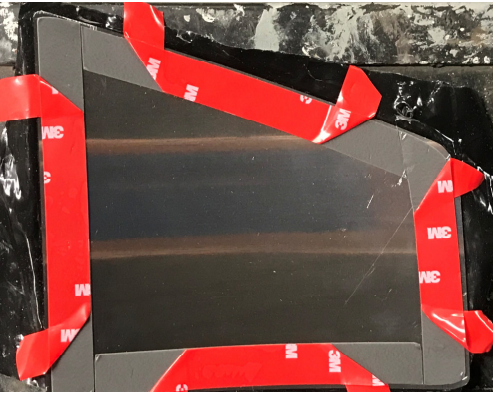
## STAINLESS STEEL ACCESSORIES

### WINDOW MIRROR TRIM PAIR, ANTHEM MACK '19+



#### INSTALLATION INSTRUCTIONS

1. Clean surface area with provided alcohol pads. It is very important for the surface to be absolutely clean to ensure proper tape adhesion.
2. **\*\*\*Do not remove tape cover yet\*\*\*** Place mirror trim in place and check for alignment.
3. Making a guide line of window trim with tape or marker (optional).



**Figure 1. Step 4 - Peel Back Tape Cover**

4. Peel back 3M tape cover from the edges about 1-2".  
**\*\*\*Do not remove all tape cover yet\*\*\***
5. Place the Trim in the desired location.
6. Remove the rest of 3M tape covers and attach the Trim to the mirror ensuring that Trims conform to the truck design.
7. Apply pressure for a sufficient period of time in order to maximize adhesion between the Trim and the truck.

8. Peel all remaining plastic, and clean with glass cleaner as necessary.
9. Repeat process for the other side if necessary.