

SLEEPER WINDOW TOP CAPS

PETERBILT 388 / 389

Panelite, Inc. · 275 Industrial Road · Cambridge, ON N3H 4R7 · Phone: 519-884-8555 · Toll Free: 1-800-331-7952 · FAX 519-884-8553 · website: www.panelite.com

Installation Procedure:

1. Mark hole locations on Aluminum trim of the truck as Figure 1 shows.

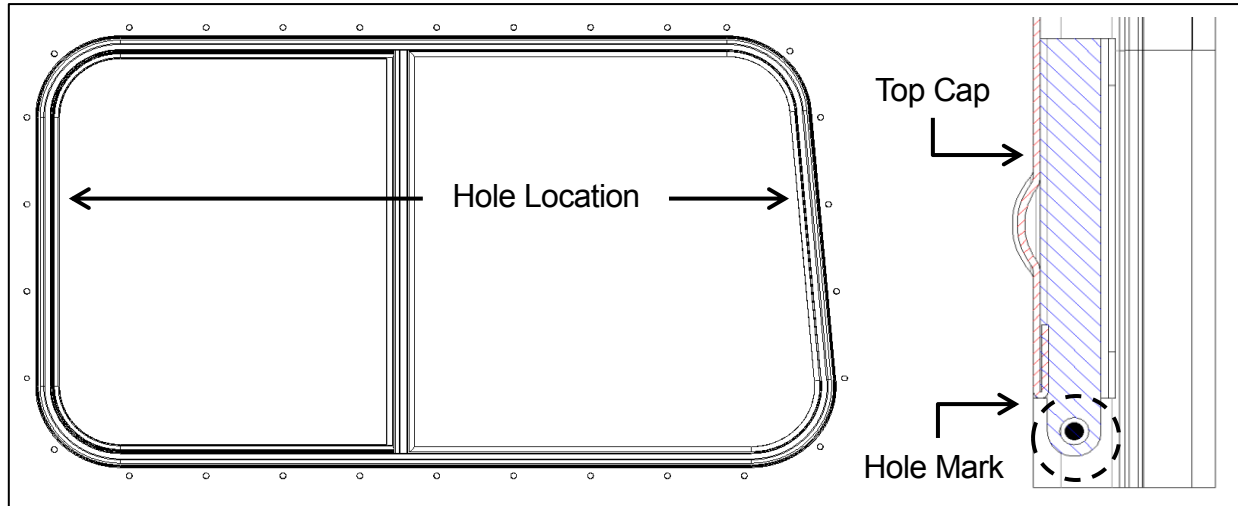


Figure 1

2. Attach protective film or tape around the marks on the cab and carefully drill using 1/8" drill bit on the marks. A wood block would be useful to prevent any scratching on the truck while drilling.
3. Clean the Aluminum trim using provided alcohol wipes.
4. Apply 3M4298 adhesion promoter to the surface along the trim. See Figure 3 for the area where the promoter needs to be applied.

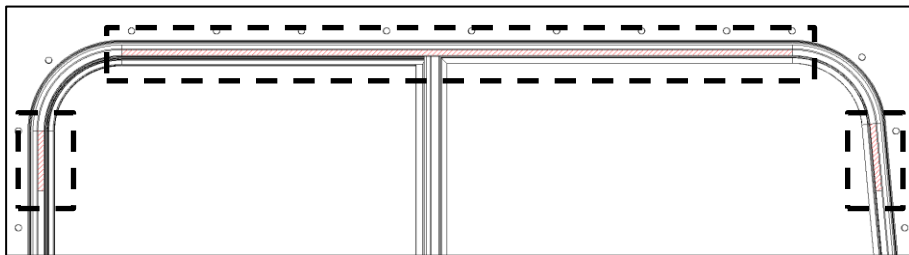


Figure 3

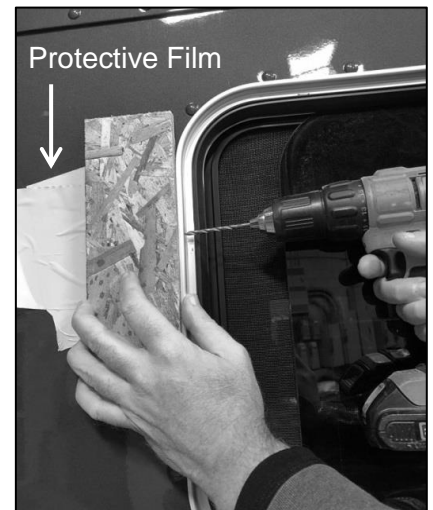


Figure 2

5. Remove plastic.

SLEEPER WINDOW TOP CAPS

PETERBILT 388 / 389

Panelite, Inc. · 275 Industrial Road · Cambridge, ON N3H 4R7 · Phone: 519 -884-8555 · Toll Free: 1-800-331-7952 · FAX 519-884-8553 · website: www.panelite.com

6. Attach a top cap to the trim. Make sure to locate the cap properly as it would not be relocated easily due to the adhesion promoter.
7. Install using provided #4 bolts and nuts. Insert the bolt from outside to inside.

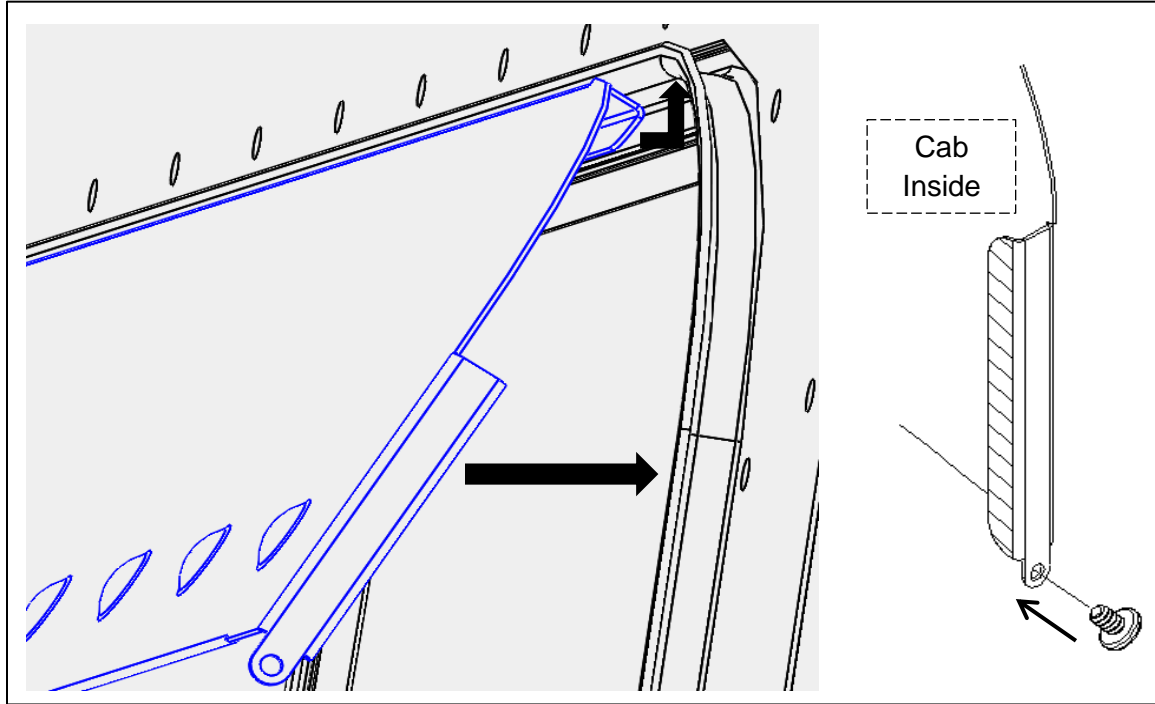


Figure 4

8. Repeat procedure 1 – 7 for the other side.