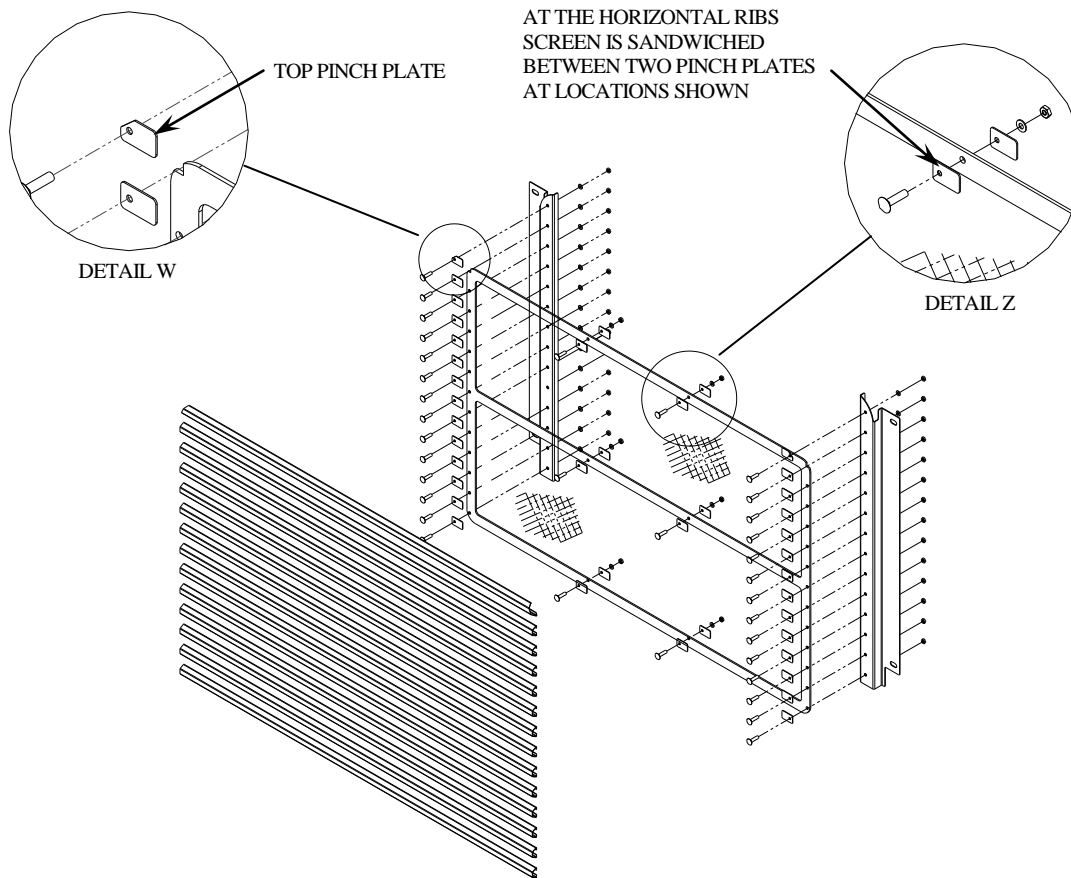


HORIZONTAL GRILLE, 4900EX WS, 2007 - REPLACES OEM GRILLE

INSTALLATION INSTRUCTIONS

1. With hood in open position, remove OEM grille, saving the 4 bolts for installation of the new stainless grille.
Remove mesh screen from grille.
2. Peel plastic film from the vertical bars and from the backs of the horizontal bars.
3. Install the vertical brackets. Ensure that the brackets are tight against the bezel.
4. Ensure that the top pinch plates are installed in their proper position (Detail W)
5. Fasten grille bar to mesh screen at top reinforcing rib by sandwiching between pinch plates, leave loose for further adjustment. (Detail Z)



Stainless Steel Accessories

6. Install pinch plate in the 2nd hole from the top of either vertical bracket. It may be necessary to cut a notch in the screen to allow for bolt clearance. Slide grille bar and screen onto pinch plate and fasten to the other side.
7. Centre screen and grille bar within bezel and drill or punch holes into the screen's reinforcing ribs at corresponding holes of vertical brackets.
8. Install pinch plates along one side of vertical bracket.
9. Working from top to bottom of hood, install the horizontal bars making sure each bar is centered within the grille bezel then tighten. (i.e. install 5 horizontal bars, centre and tighten. Repeat until all 14 horizontal bars are installed pinching mesh at centre and bottom)
10. Peel remaining plastic off horizontal bars.
11. If necessary, clean grille with glass cleaner and a soft cloth.