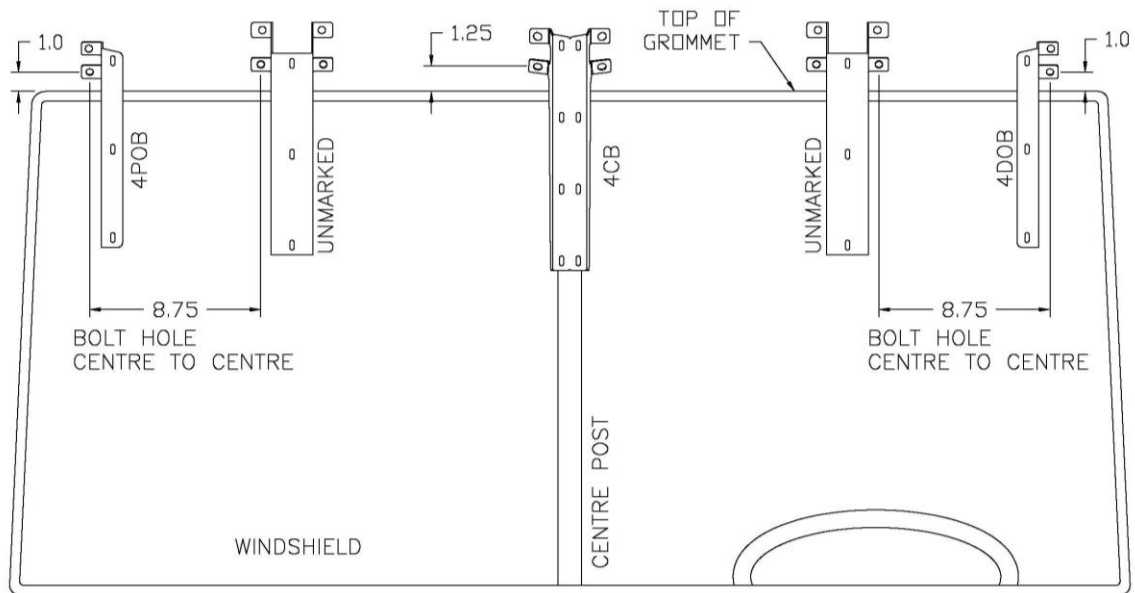


STAINLESS STEEL ACCESSORIES

W-900 13" FLAT GLASS SUNVISOR, STANDARD CAB
- REPLACEMENT FOR OEM SUNVISOR

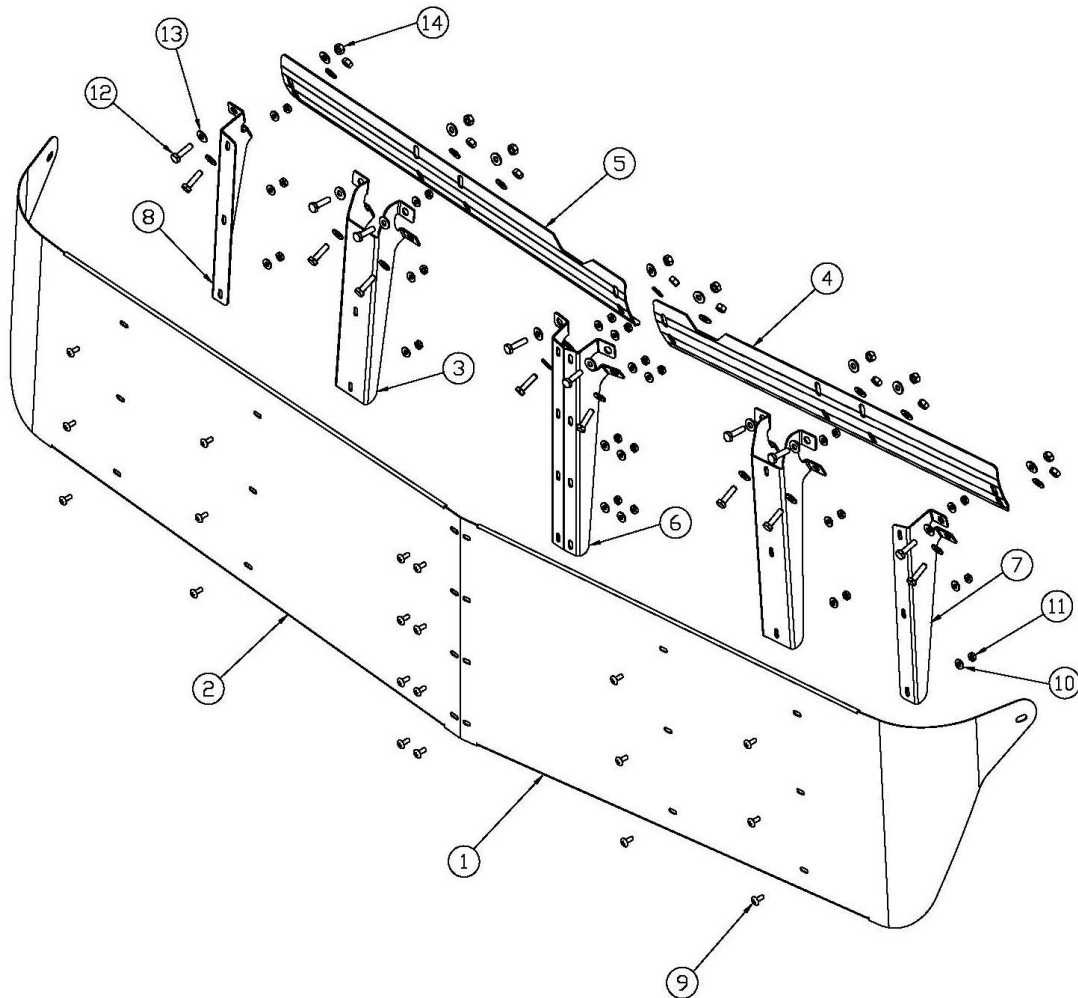
INSTALLATION INSTRUCTIONS

1. DO NOT REMOVE entire plastic coating until the last step. Peel plastic from edge and around all bolt holes.
2. Remove factory stainless steel sun-visor. Factory brackets must be removed by drilling out rivets. Keep factory end bolts for re-use.
3. Remove upper console inside cab by first removing the trim strip at the top of the console (held by clips), lower - then remove the factory brackets and screws. Next remove both of the interior sun visors, and side lights, which are attached to the console side panels. Remove all the screws, which hold the console, and remove both halves of the console from the cab.
4. Enlarge the original bracket bolt holes in roof using 9/32" drill bit.
5. Temporarily install the inside brackets (unmarked) in place of factory brackets using the 1/4"-20 bolts, washers, and nuts. Leave brackets loose enough to be adjusted.
6. Attach outer brackets (4DOB, 4POB) to corresponding visors halves and center bracket (4CB) to either visor half, leave loose enough for adjustment.
7. Temporarily install visors onto inside brackets, and ensure brackets have been fitted to the cab contour.
8. Now the remaining bracket bolt holes can be marked and drilled (using 9/32") drill bit. Diagram below is a guide showing locations of holes.



9. Remove inside brackets (unmarked) from cab and remove brackets from visor halves.

10. Reattach all 5 brackets to cab, however this time use a generous amount of supplied silicone, and use the support plates (which are installed under the bracket nuts + washers inside the cab). Leave brackets loose enough to be adjusted.
11. Once all brackets are in place, set the visor halves on the brackets. Line up all holes in the visor with the bracket holes and the end holes. Make sure all brackets are set to the same angle as each other.
12. With the visor sitting flat on the brackets, and all holes lined up, install screws, washers, nuts, and original factory end bolts **only tight enough to still allow some movement.**
13. Now finish tightening brackets to roof
14. Visor screws and bolts may now be tighten completely on both side of visor
15. Remove plastic coating.



		3	Inside Bracket-unmarked (2)	6	Center Bracket - CB (1)	9	10-32 Screw (20)	12	1/4" Hex Bolt (16)
1	Visor - Driver (1)	4	Support Plate Driver - DSP (1)	7	Outside Bracket Driver - DOB (1)	10	#10 Washer (20)	13	1/4" Washer (32)
2	Visor - Passenger (1)	5	Support Plate Passenger - PSP (1)	8	Outside Bracket Passenger - POB (1)	11	#10 Locknut (20)	14	1/4" Locknut (16)